

SECTION
(SHOWING BOTTOM SLAB &
WALL REINFORCING STEEL)

PLAN
(SHOWING TOP SLAB REINFORCING)

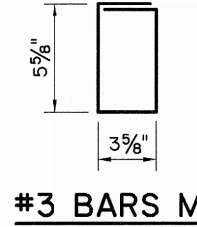


GENERAL NOTES:

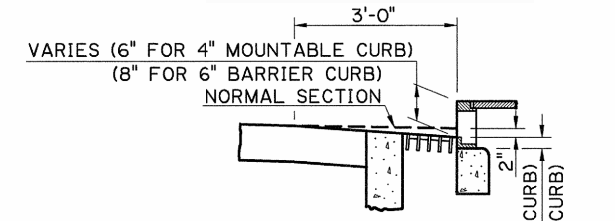
1. CATCH BASIN IS DESIGNED ACCORDING TO 4TH ED. 2007 AASHTO LRFD PROCEDURES. SECTION 702 OF THE DOTD STANDARD SPECIFICATIONS SHALL APPLY.
2. CONCRETE: ALL CONCRETE SHALL BE CLASS "M" MINOR STRUCTURE. ALL EXPOSED EDGES SHALL BE CHAMFERED 3/4 IN. EXCEPT AS NOTED.
3. REINFORCING STEEL: REINFORCING STEEL SHALL BE GRADE 60. DIMENSIONS ARE TO BAR CENTERS. MINIMUM COVER FOR REINFORCING BARS SHALL BE 2 IN. CLEAR UNLESS SHOWN OTHERWISE.
4. AS DEPTH INCREASES THE WALL AND SLAB THICKNESSES AND REINFORCEMENT SHOULD BE INCREASED AS SHOWN IN THE TABLE BELOW. THE CONTRACTOR HAS THE OPTION TO PROVIDE THE MAXIMUM REQUIRED WALL THICKNESS FOR THE FULL DEPTH OF THE STRUCTURE.

DEPTH RANGE	WALLS		BOTTOM SLAB	
	N IN.	D BARS SIZE SPAC., IN.	T IN.	E BARS SIZE SPAC., IN.
0' TO 7'	6.0	4 4.5	6.0	4 7.5
7'-1" TO 11'	7.0	4 5.0	6.5	4 5.5
11'-1" TO 18'	8.0	5 5.5	7.5	4 4.5
18'-1" TO 20'	8.5	5 5.5	8.0	4 4.0

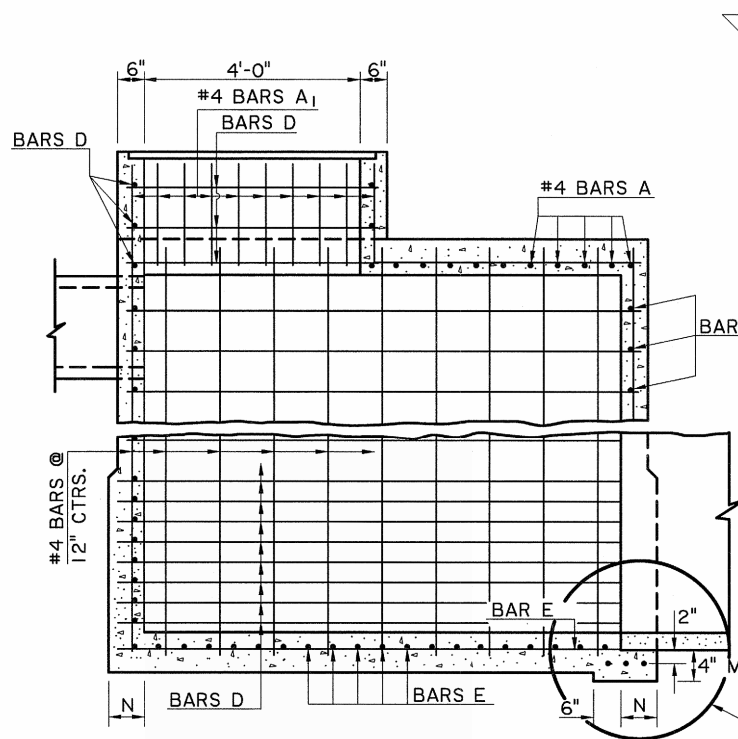
5. FOR DETAILS OF METAL COVER, FRAME, AND GRATE, SEE STD. PLAN MC-01, TYPE H & TYPE I.
6. THE CONTRACTOR WILL NOT POUR ABOVE THE BOTTOM OF THE SLAB UNTIL THE PAVING ADJACENT TO THE CATCH BASIN HAS BEEN COMPLETED.



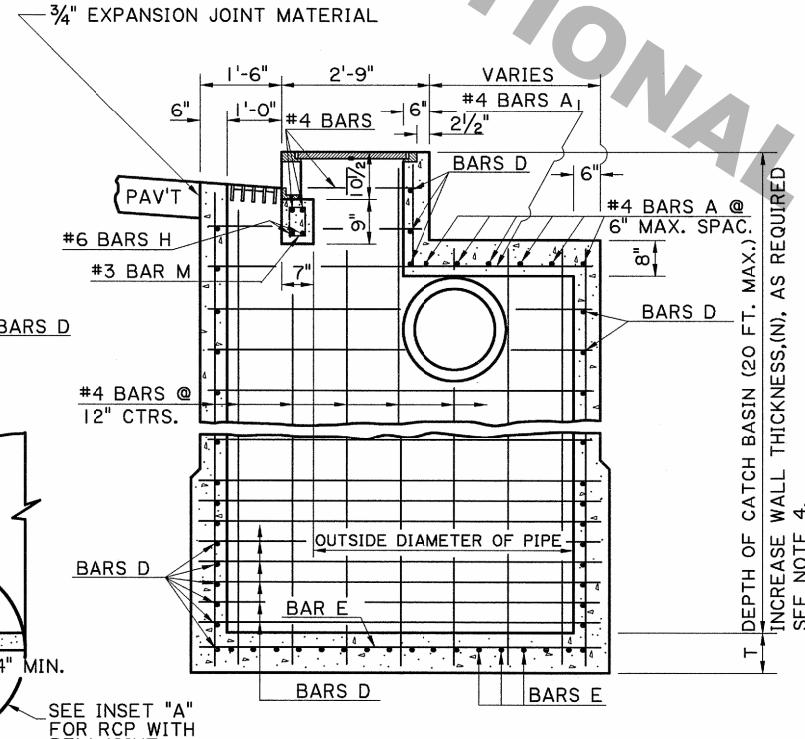
#3 BARS M



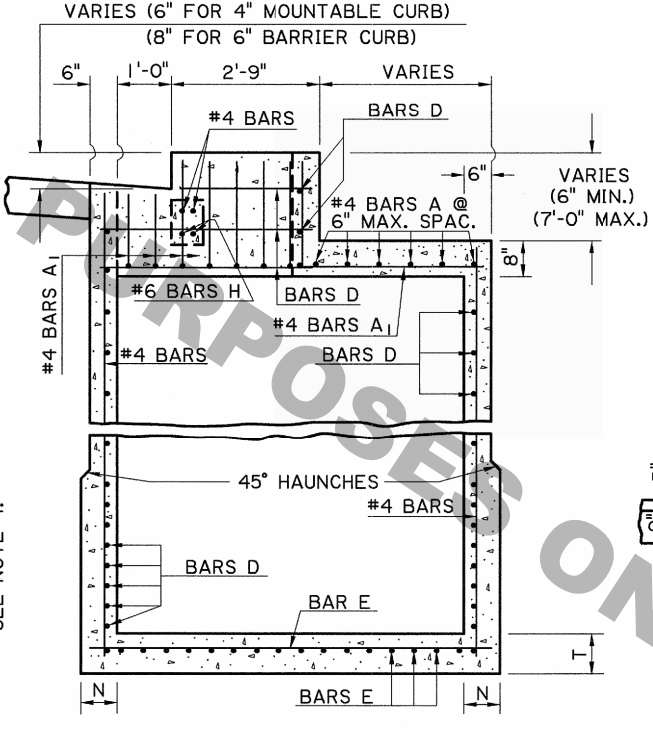
SECTION
(SHOWING PAVEMENT
SUMP TYPICAL)



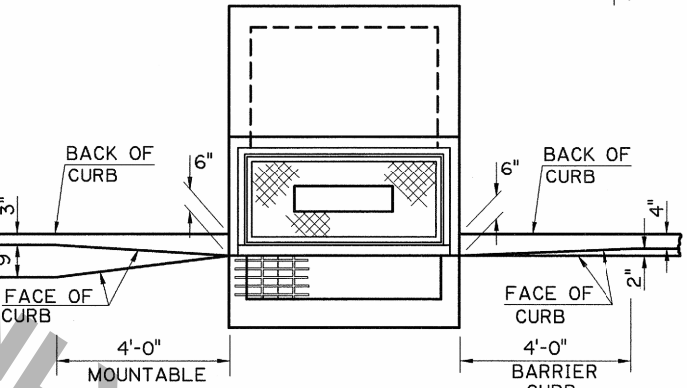
SECTION D-D



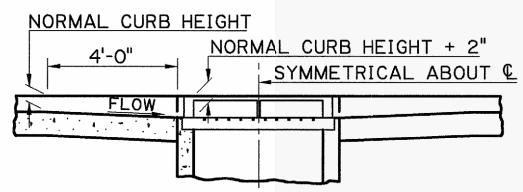
SECTION A-A



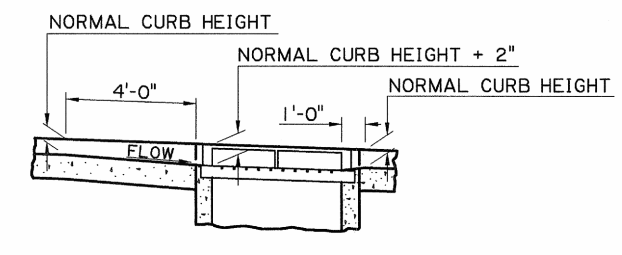
SECTION B-B
SHOWING MOUNTABLE CURB



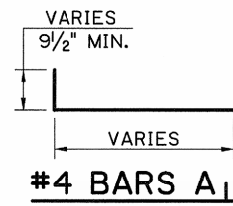
TRANSITION IN CURB WIDTH
(TYPICAL)



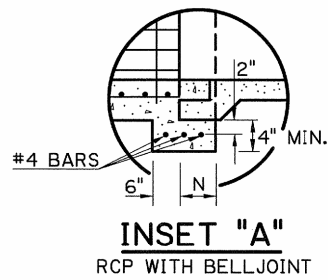
TRANSITION IN CURB HEIGHT
CATCH BASIN AT LOW POINT



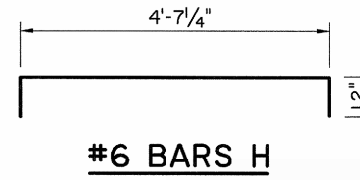
TRANSITION IN CURB HEIGHT
CATCH BASIN ON A GRADE



#4 BARS A1



INSET "A"
RCP WITH BELLJOINT



#6 BARS H

SHEET NUMBER: 1 OF 1
 PARISH: [blank]
 FEDERAL PROJECT: [blank]
 STATE PROJECT: [blank]
 DATE: 11-15-90
 DESIGNED: LAB
 CHECKED: PAA
 DETAILED: KAJ
 CHECKED: PAA
 WMR
 JCM
 Rev. to AASHTO LRFD Procedures, Rev. size 8'-10"
 3 3-10-11
 2 4-10-00
 1 8-18-98
 WMR
 JCM
 REVISION DESCRIPTION
 NO. DATE
 1 CHANGED SHEET BORDER AND ADDED NAME
 2 REVISED TITLE BLOCK
 3
 STATE OF LOUISIANA
 REGISTERED PROFESSIONAL ENGINEER
 WILLIAM M. RAY
 LICENSE NO. 24936
 EXPIRES 12/31/2011
 CONCRETE CATCH BASIN
 CURB AND GUTTER OPENING
 4" Mountable Or 6" Barrier Curb
 Max. Size: 72" x 84" RCP, Max. Depth 20"
 SPECIAL DETAIL
 CB-SD07
 HYDRAULICS SECTION